

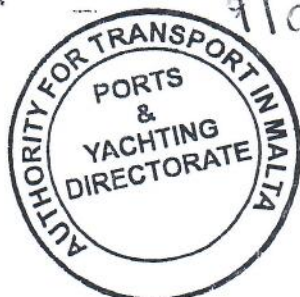


**MANOEL ISLAND**  
YACHT MARINA

# Manoel Island Yacht Marina

## Waste Management Plan

*Kristine Darnesi*  
9/06/2021



*[Signature]*  
MANOEL ISLAND YACHT MARINA LTD.  
Manoel Island, Gzira GZR 3013, Malta  
Tel. Nos: 21342618  
email: info@miym.mt

## 1.0 General

This Waste Management Plan is a document regulating and directing waste handled by Manoel Island Yacht Marina.

The plan is being formulated In line with article 6(1) of S.L. 499.30 which states that:

"A Port or terminal operator shall prepare a waste management plan with respect to the provision and use of port reception facilities in consultation with all stake holders"

The general aim is to improve waste management in our marina through a well structured, integrated, flexible, environmentally sound and cost-effective system of handling waste and residues generated by yachts, boats and other recreational craft berthed in the marina.

This document is considered to be a dynamic plan that will have to be continuously revised, assessed and amended according to changes taking place within the yachting industry. This document is reviewed every 12 months and has to be reapproved every three years by the Authority for Transport in Malta.

### 1.1 Description for need of port reception facilities in the light of the need of the vessels normally visiting the marina

Activity in all marinas is affected by the Mediterranean pleasure boat season, where the period between May and October is the busiest.

#### 1.1.1 Location of Marina

The Marina is located in Manoel Island, Gzira and there are four finger pontoons and a number of boats can be berthed 'stern to' against the quay near Lazaretto.

- Number of berths at the marina is approximately 200.

Average occupancy of the Marina is always close to full capacity due to the number of permanent berth holders.

### 1.2 Description of type and capacity of Port Reception Facilities

Port reception facilities are of two types:

- Fixed: These include drums, skips and bring in sites used for recycling material
- Mobile: These include services by licensed waste carriers. Transport Malta has applied the policy that as from 1<sup>st</sup> September 2008 only licensed waste carriers will be allowed in any of the port areas.

### 1.2.1 Oils

All drums are available on a 24 hour basis just inside the yard. These are known by the owners of the vessels berthed at Manoel Island Yacht Marina. If extra oil drums are needed these are procured through Waste Oils Ltd. The contractor disposes of the waste in either of two ways. He either vacuums the oil directly from the drums to his waste oil bowser or takes the whole drums and replaces them with empty ones.

### 1.2.2 Sewage

Bulk sewage may be discharged into road tankers by approved contractors. These arrangements can be made through the yacht's agent or through the marina office.

### 1.2.3 Garbage

A total of twenty one skips (4 of which are separator recycling skips for plastic, glass etc) have been made available next to each pontoon and all along the access road and their disposal is carried out daily by Green Lines Ltd.

### 1.2.4 Other

Oily solids (oil filters, rags etc.) are considered as "Hazardous Waste". Such waste is collected and bagged by marina staff and disposed appropriately.

The following grid illustrates the type of waste reception facilities available for ship generated waste in the marinas.

	Manoel Island Yacht Marina
Oil	Type: IBC Quantity: 1 Capacity: 1000 litres  Road Tankers are available on request.
Sewage	Mobile facilities (trucks) are available on request.  Restrooms are available for every marina user.
Garbage	Type: Mobile skips Quantity: 16 4 of which for recycling Capacity: 1100 Litres
Other	Oily solids and rags are considered as hazardous waste and should be bagged separately for appropriate disposal.

### 1.3 Description for procedure for the reception and collection of ship-generated waste and cargo residues.

Since most of the vessels calling at the marinas are below 12 passengers, no notification is required.

In the case of oil and garbage, the waste facilities are 'self-service' whereby the wastes are carried off-board by the vessel owners and disposed in the appropriate facilities.

In the case of large amounts of oil or sewage, a waste collector will have to be engaged.

Cargo residues are not dealt with in marinas.

### 1.4 Description of Charging System

Fees for the collection of garbage and oil are Included In the berthing fees.

If 'larger' amounts of oil need to be removed, then an arrangement between a private contractor and the boat owner needs to be carried out and the contractor establishes the fees. Such quantities are however rare except In the case of larger yachts.

In the case of sewage, restroom facilities are provided Included In the berthing fees to all marina users. If large quantities of sewage need to be removed, then a waste collector may be contacted.

### 1.5 Procedures for reporting alleged inadequacies of port reception facilities

In order provide an adequate service, the form as attached In Appendix III is available at the front desk of the Marina. The forms may be addressed to the following:

Marine Operations and Incident Response

Ports and Yachting Directorate

Transport Malta

Malta Transport Centre

Marsa

Tel: +35621222203 / 22914437 / 22914020 / 22914421

Fax: +35622914429

Email: [response.tm@transport.gov.mt](mailto:response.tm@transport.gov.mt)

In case of emergency after office hours to Contact Duty Operations Officer at Valletta Ports Vessel Traffic Service VTS on (356) 2291 4491 or (356) 2291 4492

Alleged inadequate and malpractices which may take place at the Marina shall be recorded and the necessary action taken to rectify the issues involved.

Also refer to "Information to Users" attached in Appendix IV.

**1.6 Procedures for ongoing consultations with port or terminal users, authorized waste management undertakings, terminal operators and other Interested Parties**

There are no formal procedures however, the size of the marina allows for open dialogue and direct contact between the marina users and operators as well as entities involved in waste collection.

**1.7 Types and quantities of ship-generated waste and cargo residues handled.**

Types and quantities of waste handled vary according to season. Due to much higher marina activity the summer months (from May - Oct) more ship-generated waste is gathered reflected through more frequent filling-up of the reception facilities made available.

Estimated annual quantities of waste generated from yachts are as follows:

**Quantities of waste oil (m<sup>3</sup>) received per year**

Year	2017	2018	2019	2020
Volume	6	6.9	9.0	3.2

**Quantities of sewage (m<sup>3</sup>) received per year**

Year	2017	2018	2019	2020
Volume	3	3.6	NIL	21

**Quantities of garbage (tonnes) received per year**

Year	2017	2018	2019	2020
Volume	259.1	311.7	176.8	185.45

**Waste separation (tonnes) received per year 2017**

Type of Waste	General Waste	Glass	Plastic	Paper	Metal
Volume	250	2.6	1.2	4.6	0.7

**Waste separation (tonnes) received per year 2018**

Type of Waste	General Waste	Glass	Mixed Recycling	Metal
Volume / m <sup>3</sup>	302.2	/	9.5	/

**Waste separation (kgs) received per year 2019**

Type of Waste	General Waste	Glass	Mixed Recycling	Metal
Volume / m <sup>3</sup>	168	6.0	2.8	/

**Waste separation (kgs) received per year 2020**

Type of Waste	General Waste	Glass	Mixed Recycling	Metal
Volume m <sup>3</sup>	175	6.55	3.9	/

## 2. Other

### 2.1 Summary of relevant legislation and formalities for delivery

The Port Reception Facilities Directive 2000/59/EC has been transposed into Maltese Legislation as

S.L 499.30 titled 'Port Reception Facilities for Ship-Generated Wastes and Cargo Residues' under the Authority for Transport in Malta Act (Chapter 499).

Other applicable legislation falls under the Malta Environment and Resource Authority Act since it relates to waste collection, transport, licensing, delivery to sites and disposal. The legal notices include but are not limited to and without prejudice to other legislation:

- ❖ Authority for Transport in Malta Act and its subsidiary legislation including:
- ❖ S.L.499.30 Port Reception Facilities for Ship-Generated Waste and Cargo Residues
- ❖ Port Notice 004/04 – Directive 2000/59/EC of the European Parliament and of the Council of 27th November 2000 on Port Reception Facilities for Ship-Generated Waste and Cargo Residue
- ❖ Port Notice No. 05/08 – Management, Collection and Disposal of Waste from Ships calling in Maltese Ports
- ❖ Port Notice No. 05/12 – Collection, Carriage and Transport of Waste from ships
- ❖ Port Notice 01/17 – Ship-Generated Waste Management Fee
- ❖ Port Notice 02/17 – Port Waste Management Plan
  
- ❖ Environment Protection Act and its subsidiary legislation including:
- ❖ S.L.435.44 Waste Management (Waste Oils) Regulations 2002
- ❖ S.L 504.73 Waste Management (Permit and Control) Regulations 2001
- ❖ S.L.504.78 Waste Management (Activity Registration) Regulations, 2004

Malta is party to the MARPOL Convention and its Annexes.

2.2 Identification of person or persons to be responsible for the Implementation of the Waste Management Plan.

<b>Manoel Island Yacht Marina</b>	
Pierre Aquilina Marina Manager Manoel Island Yacht Marina Manoel Island Gzira 3013 Tel: 21342618 21342619 Mob: 99430140	Michaela Galea Zammit Administration Manoel Island Yacht Marina Manoel Island Gzira 3013 Tel: 21342618 21342619
After Office Hours: 9943 0140	Mon to Fri from 08:00 till 17:00

2.3 Identification of pre-treatment equipment

No pre treatment equipment is available at the present time.

2.4 Description of methods of recording actual use of the port reception facilities

Oily waste drums as well as skips are monitored through daily morning rounds to ensure that the port reception facilities are being made available in a proper manner as well as to check if the latter are full and need to be replaced.

The Marina Manager, Pierre Aquilina, is informed by marina personnel or the users if the skips are full and need to be replaced. The skips are emptied on a daily basis, while bring-in sites are also emptied on a daily basis. Invoices are kept at the Marina Office.

2.5 Description of methods for recording amounts of ship-generated waste and cargo residues received.

Amounts are recorded through the compilation of receipts received as a result of removal of waste by waste carriers with respect to oil drums and skips.

When mobile facilities (waste collectors) are engaged for the specific removal of waste, a receipt is provided to the Marina Office.

## 2.6 Description of how ship-generated waste and cargo residues are disposed of

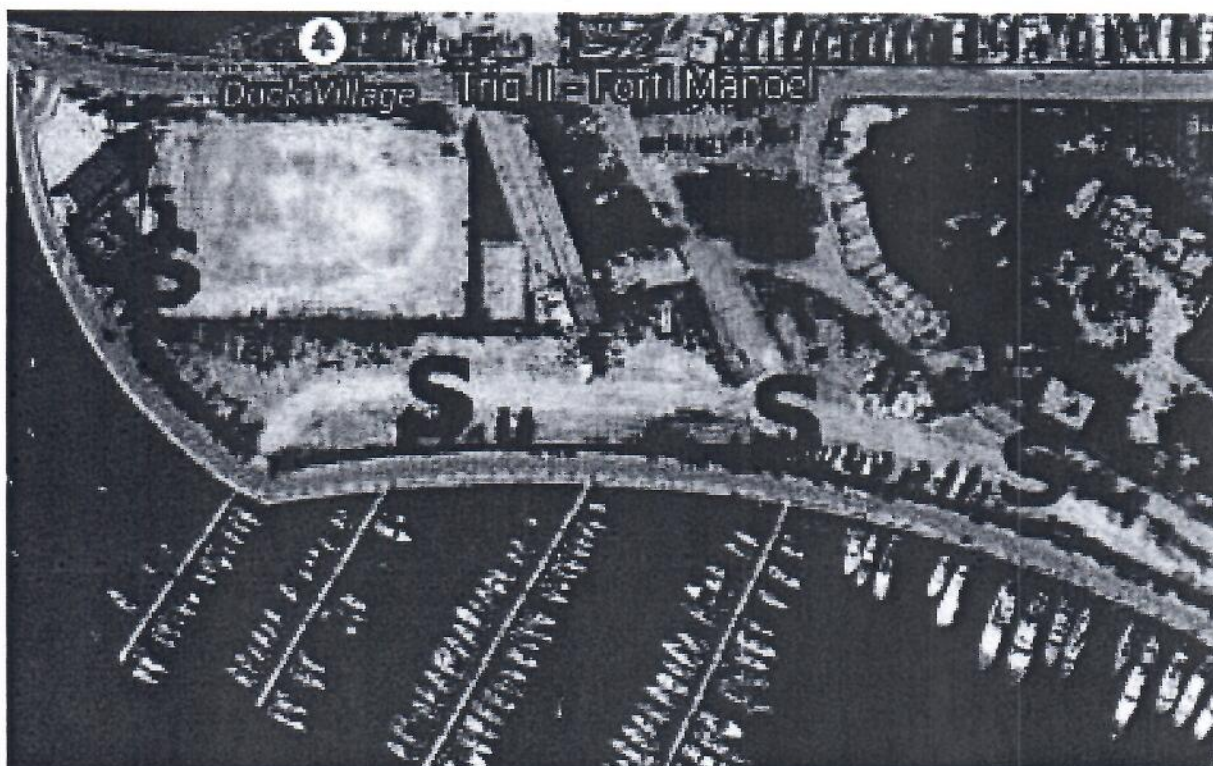
Waste management and disposal is under the jurisdiction of the Malta Environment and Planning Authority and is regulated by S.L. 504.37 - Waste Management (Permit and Control) Regulations.

Only licensed waste collectors are allowed on the premises as regulated by the Malta Environment and Planning Authority and as determined by Port Notice 05/08 on Management, Collection and Disposal of Waste from ships calling In Maltese Ports.

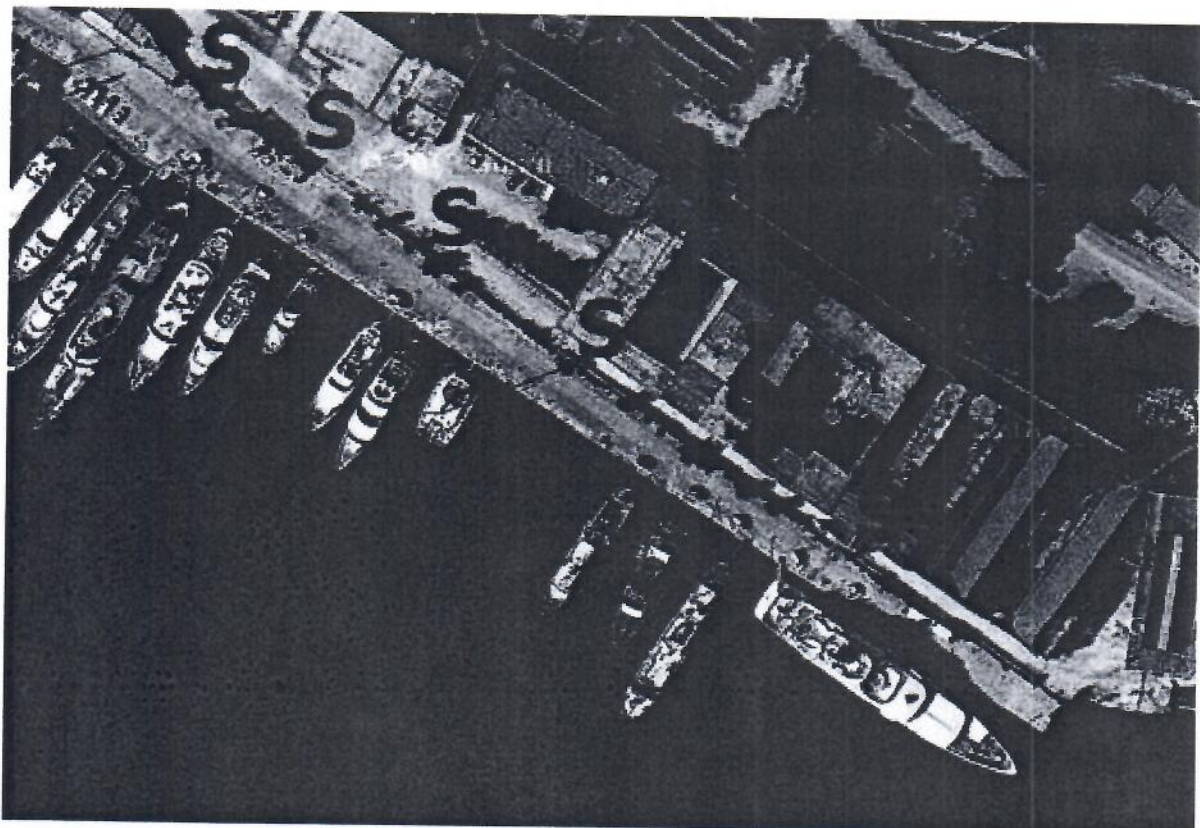
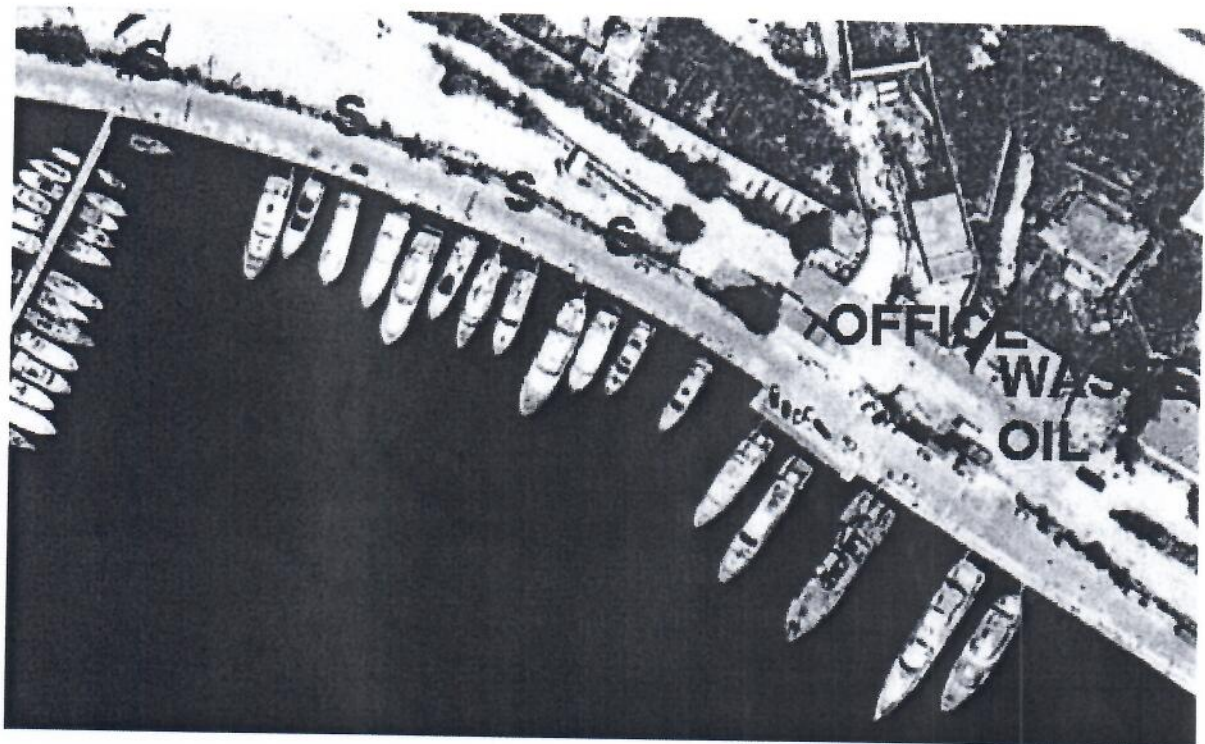
## Appendix I - Map of the Marina and Reception Facilities Available



Overall layout of the whole Marina



Office = Reception/Offices  
S = Skips



Office = Reception/Offices  
 S = Skips

## **Appendix II - List of Waste Collectors Engaged on a Regular Basis**

*Manjon Environmental Services - 79563088*

*Waste Oils Co Ltd - 21 446398 or 9944 2468*

*Polidano Group - 21244520 or 21244241*

## Appendix III - Reporting Alleged Inadequacies

### APPENDIX III - COMPLAINTS FORM

Name of Yacht:	
Berth:	
Owner/Caretaker:	
No of persons on board:	

Special problem such as: Unnecessary delay, insufficient waste reception facilities, not technically possible to use waste reception facilities, or other. Please list and comment them.

--

Remarks

--

Signature and stamp

## Appendix IV - Information for Marina Users

Information for all marina users is transmitted via emails and newsletters and also on appropriate notice boards inside the offices. In accordance with S.L. 499.30 transposed from 2000/59/EC on Port Reception Facilities for Ship-Generated Waste and Cargo Residues please note that there are facilities in this marina available for the disposal of:

- OIL
- SEWAGE (FOR LARGE QUANTITIES - ON REQUEST)
- GARBAGE

**Oil:** Oil can be disposed in the waste OIL drums located in the marina. For larger quantities of oil, please contact our reception / office and we will contact Waste Oils accordingly. For larger quantities, the user is charged directly or invoiced accordingly.

**Garbage:** Garbage may be disposed in the mobile skips present along the marina. Manoel Island Yacht Marina has a contract with Green Lines to empty the skips and remove trash on a daily basis.

**Sewage:** Sewage In bulk may also be discharged on request by road tanker and a fee will be charged paid directly and as determined to the waste collector available at the time.

**OILY RAGS ARE CONSIDERED AS HAZARDOUS WASTE AND THEREFORE THESE ARE TO BE BAGGED SEPARATELY AND COLLECTED BY THE MARINA STAFF**

In case you are not satisfied with the reception facilities available, or have any general complaints on their adequacy, you may either fill in a form available from the Main Office of the marina, or you may contact the numbers below.

Manoel Island Yacht Marina	Manoel Island Yacht Marina
Pierre Aquilina Marina Manager Manoel Island Yacht Marina Manoel-Island Gzira 3013  Tel: 21342618 21342619 Mob1: 99430140	Michaela Galea Zammit Administration Manoel Island Yacht Marina Manoel Island Gzira 3013  Tel: 21342618 21342619
Mobile: 9943 0140	Mon to Fri from 08:00 till 17:00

## **Description of the Charging System**

Fees for the collection of garbage are included in the berthing fees. If oil needs to be removed, then an arrangement between a private contractor and the boat owner needs to be carried out and the contractor establishes the fees. Such quantities are however rare except in the case of larger yachts.

In the case of sewage, restroom facilities are provided Included in the berthing fees to all marina users. If large quantities of sewage need to be removed, then a waste collector may be contacted from the list above.